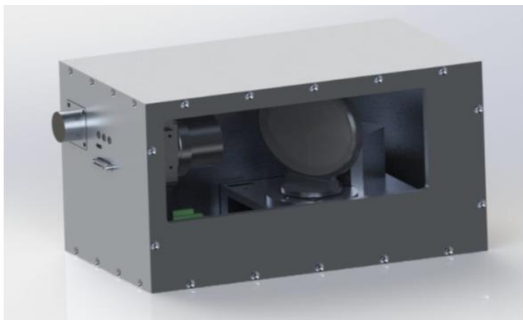


Talon-D69

SP01050E10

Persistent Security & Surveillance

Talon is a persistent surveillance system with fixed Dual Camera with Day and Night capability and especially designed for Border, Forest or any Perimeter protection of Infrastructure Assets .



Features

- LWIR + Visible
- PAN SWEEP 72°
- Autonomous Scan, Detect and Warn
- Position to Que
- Multiple object detection
- ONVIF-s Protocol enabled
- Interfacing options for Systems Integration

Applications

- Ground Inland or Coastal Installation
- Mid-range to long range surveillance zone
- Surveillance of protected space against unlawful acts or intrusion
- Visual Confirmation of target
- Land, Sea and air spaces monitoring
- Stand-alone operation or integrated multi-sensor system

Benefits

A capable cost- effective day/night solution to enable long range visual surveillance over the customer's high value site resulting in enhanced security management

AIR



SEA



LAND



SPECIFICATION

SP01050E10

THERMAL MODULE SPECIFICATION			
ARRAY TYPE	<i>a-Si Microbolometer</i>	SPECTRAL BAND	<i>8 - 14µm</i>
ARRAY SIZE	<i>640 x 480</i>	PIXEL PITCH	<i>12/17 µm</i>
FRAME RATE	<i>≥ 50 frames / second</i>	NETD	<i>< 50 Mk (@ 25° C, f/1)</i>
ELECTRONIC ZOOM	<i>8 to 14 µm</i>	CALIBRATION	<i>Temperature Based ONE POINT</i>
CONTRAST/ BRIGHTNESS	<i>Auto / Manual</i>	NOISE REDUCTION MODE	<i>ON / OFF</i>
COLOR PALETTES	<i>12 Numbers</i>	QUALIFICATIONS	<i>MIL-810F</i>
Range (small elephant)	<i>700m recognition</i>	PAN- WIDE -HFOV	<i>72° (9° x 8 times)</i>
DAY MODULE			
SENSOR	<i>1/2.8-type Progressive Scan CMOS</i>	SHUTTER SPEED	<i>1/25 to 1/15000 sec</i>
SENSOR FORMAT	<i>Effective Pixel 1920X1080 (2.13 MP)</i>	DAY/NIGHT	<i>IR Cut Filter for day/night</i>
NOISE REDUCTION	<i>3D DNR</i>	DE FOG PENETRATION	<i>On/Off</i>
WIDE DYNAMIC RANGE	<i>130 Db</i>	BACK LIGHT COMPENSATION	<i>On/Off</i>
LENS	<i>4.3mm to 129mm</i>	AUTO-WHITE BALANCE	<i>On/Off</i>
OPTICAL ZOOM	<i>30x</i>	FRAME-RATE	<i>50 fps</i>
DIGITAL ZOOM	<i>12x</i>	VIDEO COMPRESSION	<i>Mainstream H.264/MJPEG</i>
HFOV (SWEEP)	<i>72° (9° x 8 times)</i>	Range (small elephant)	<i>~ 2.5 km</i>
TARGET TRACKING FUNCTION			
MULTIPLE OBJECT DETECTION	<i>AI Based Object Detection and Classification Up to 4 objects</i>	MOVING OBJECT DETECTION	<i>Yes</i>
GENERAL			
NETWORK CONNECTIVITY	<i>Ethernet</i>	COMMUNICATION	<i>Ethernet</i>
OPERATING TEMP	<i>0 to +55° C</i>	STORAGE	<i>-20° to +70° C</i>
ENCRYPTION	<i>SSL, AES, TLS</i>	VIDEO STREAMING	<i>Dual Stream , H-264</i>
DUST / WAER PROTECTION	<i>IP -66</i>	ELECTRICAL POWER	<i>+12 VDC (Max 40W)</i>
CAMERA PAN	<i>Pan Enabled within the Field of Regard (min 72°) without external motion of the camera</i>	OVER ALL WEIGHT	<i>< 8 KG</i>

Note: Anilinear reserves the right to modify the specifications due to changes in design and improvements in technology without prior notice, hence contact sales for any latest information

Anilinear Technologies

Email : sales@aninlear.com
 Ph : +91 98483 72063
 Address : 4 A -1, GMR Aerospace Park,
 Rajiv Gandhi International Airport,
 Shamshabad, Hyderabad 500108,
 Telangana. INDIA